



# Become a FITCI Power Partner

*Ignite Innovation & Transform Lives*



[info@fitci.org](mailto:info@fitci.org)



[www.fitci.org](http://www.fitci.org)



301-694-2999

# About Us

Since 2004, FITCI has been Frederick's premier innovation hub, supporting startups in biotech, agtech, medtech, and beyond. With state-of-the-art office and lab spaces, tailored programs, and a robust network of experts, FITCI empowers entrepreneurs to transform ideas into impactful businesses.

Our Power Partner Program offers organizations a unique opportunity to connect with our dynamic community of startups, fostering meaningful collaborations that drive innovation and growth. By partnering with FITCI, you're investing in the next generation of leaders and technologies while gaining unparalleled access to our thriving ecosystem.

## Why Partner with FITCI?

- **Amplified Visibility:** Showcase your brand to a focused audience of innovators, investors, and entrepreneurs.
- **Exclusive Access:** Engage directly with emerging startups and thought leaders in tech and biotech.
- **Community Impact:** Drive innovation and economic growth in Frederick and beyond by supporting startups at pivotal stages of their journey.

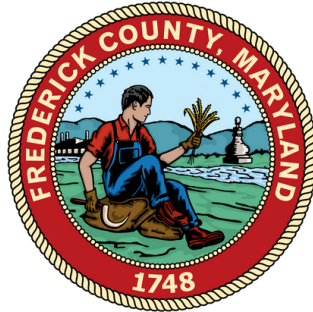
Let FITCI connect you to the future of innovation. Join us as a Power Partner and make a meaningful impact on the next wave of entrepreneurs and visionaries.



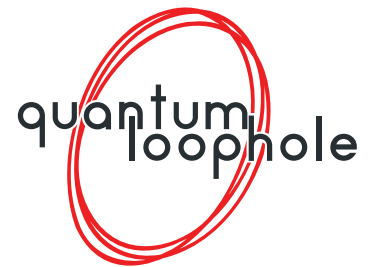
# Our 2024 Partners



**FREDERICK**  
MARYLAND



**VENABLE** LLP  
LEGACY SPONSOR



# Power Partner Packages



\$1,500

## ASCENT

- Recognition on the FITCI website
  - Partnership announcement via monthly newsletter
  - Sponsorship listing for one FITCI event
  - 1 FITCI Base Camp day-pass (per quarter)
  - 1 social media post highlighting our partnership
  - Inclusion in FITCI's Annual Report as a key supporter of innovation
- 

\$5,000

## PEAK

- All Ascent Level benefits
- Lead acknowledgment in press materials
- Logo included in 4 FITCI Monthly Newsletters per year (1 per quarter)
- Expo table at two events
- Featured promotion across social media channels (3 posts/year) with engagement metrics provided
- Blog-style interview posted on the FITCI website
- 1 additional mention in one of the monthly newsletters
- 1 two-hour conference room booking per year
- 1 additional FITCI Base Camp day-pass (per quarter) giving you access to FITCI's coworking space (2 total per quarter)
- Invitation to participate in a FITCI Power Partner networking session with startups

# SUMMIT



\$7,500

- All Peak Level benefits
  - Sponsorship recognition at all FITCI-hosted events
  - 1 tailored event to align with your brand or business
  - Special verbal acknowledgments during two FITCI events for brand visibility
  - 1 podcast-style interview featured on FITCI's website and shared across channels
  - 1 in-depth highlight in the newsletter per year
  - 1 half-day conference room booking per year
  - Logo included in 1 additional quarter of the FITCI Monthly Newsletter (5 total per year)
  - Access to FITCI hot desk once per quarter
  - Opportunity to sponsor a FITCI award (e.g., "Summit Innovation Award")
- 

# PINNACLE

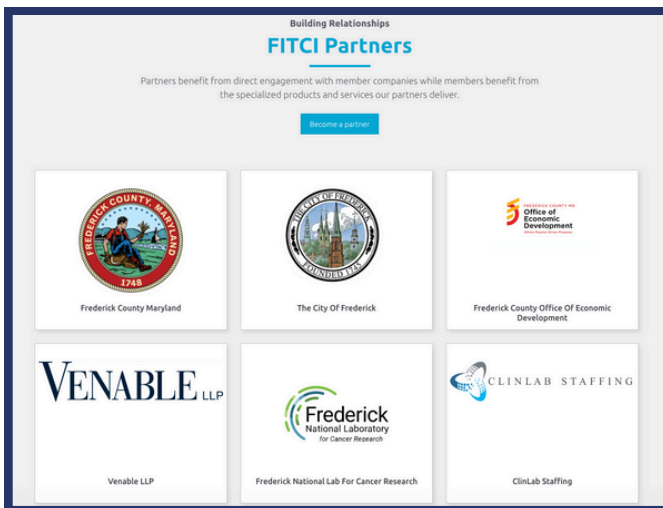


\$10,000

- All Summit Level benefits
- Sponsored emails to FITCI's ecosystem 3x per year, with analytics provided
- Most prominent branding at events and expos (banners, co-branded materials, etc.)
- Video interview featured on FITCI's website and shared across channels
- Opportunity to host two virtual webinars with attendee insights provided
- Logo included in every monthly newsletter
- 1 day-pass to Base Camp coworking space per month
- 1 full-day conference room booking per year
- Access to FITCI hot desk once per month
- Invitation to exclusive roundtables or mentorship opportunities with FITCI members

# Recognition and Promotion

As a Power Partner, your brand gains consistent recognition in FITCI's community and online presence, ensuring visibility to a broad audience of innovators, investors, and industry leaders.



● ● ● ● Recognition on the FITCI website

### New Power Partners

Power Partners drive innovation and economic growth in Frederick and beyond by supporting FITCI startups at pivotal stages of their journey. If you'd like to discuss becoming a Power Partner please [fill out this form](#) or give us a call at 301-694-2999.

[Venable LLP](#) is a leading law firm with offices in Washington D.C. and across the country. They will be assisting FITCI startups in navigating federal regulatory pathways, such as FDA approvals and biologics regulations, with precision and insight.

[ClinLab Staffing](#) connects those in the life science and biotech industries with top talent, helping organizations manage their critical scientific staffing needs by leveraging a large, industry-specific talent pool.

## Monthly Newsletter

- Partnership announcement in monthly newsletter
- Partnership announcement + logo included in 4 monthly newsletters per year (1 per quarter) + 1 additional mention in another edition of the newsletter
- Partnership announcement + logo included in 1 additional quarter of the FITCI Monthly Newsletter (5 total per year) + 1 in-depth highlight in the newsletter
- Partnership announcement + logo included in every monthly newsletter + 1 in-depth highlight in the newsletter

**Frederick Innovative Technology Center, Inc**  
2,253 followers  
3w · Edited · 🌐

We're so excited to have [Venable LLP](#) as our newest Power Partner! Venable is a leading law firm with offices in Washington D.C. and across the country. They will be assisting FITCI startups in navigating federal regulatory pathways, such as FDA approvals and biologics regulations, with precision and insight.

Read more about what this partnership means for the FITCI community in our latest blog post: [https://hubs.ly/Q02\\_YFX20](https://hubs.ly/Q02_YFX20)

You can also learn about the Venable Ventures program, a full service, reduced-cost option for startups and early-stage companies, linked in the comments 📌

If you're attending the FITCI Holiday Party tonight, co-sponsored by BluZoneBio and Venable, please be sure to introduce yourself to Venable Partners [Jeremiah J. Kelly](#) and [Justin Coen](#)!

**VENABLE LLP** Venable: Power Partner Fuels Innovation for FITCI's Science & Technology Entrepreneurs – FITCI  
fitci.org

● 1 social media post reaching FITCI's engaged audience

● ● ● 3+ social media posts per year

**Thank You, Partners & Sponsors**

We are forever grateful for those who have *given so much* to our organization and community. Thank you for believing in our mission.

THANK YOU TO OUR ADDITIONAL SPONSORS, GRANTORS, & ADVOCATES:  
 Glenn Lesley | Linganore Winecellars  
 Senator Chris Van Hollen | Congressman David Trone | U.S. Economic Development Administration  
 The State of Maryland | U.S. Small Business Administration | Exelon Corporation  
 Trust | The Scott Foundation



Interviews posted to FITCI website

- Blog-style
- Video-style
- Podcast-style

- ● ● ● Inclusion in FITCI's Annual Report as a key supporter of innovation



- Sponsored emails 3x per year with analytics provided

**MARYLAND'S EDGE**  
**FITCI**

Thank you to our members, founders, sponsors, volunteers, and supporters!

- ● ● Lead acknowledgment in press materials

Thank you to FITCI's Sponsors

**20**

- Most prominent branding at events and expos (banners, co-branded materials, etc.)

# Events



● ● ● Expo table at two events



● ● Sponsorship listing at 1 event  
● ● Sponsorship recognition at all FITCI-hosted events



● ● Special verbal acknowledgments during events to amplify brand visibility



● ● 1 tailored event to align with your brand or business





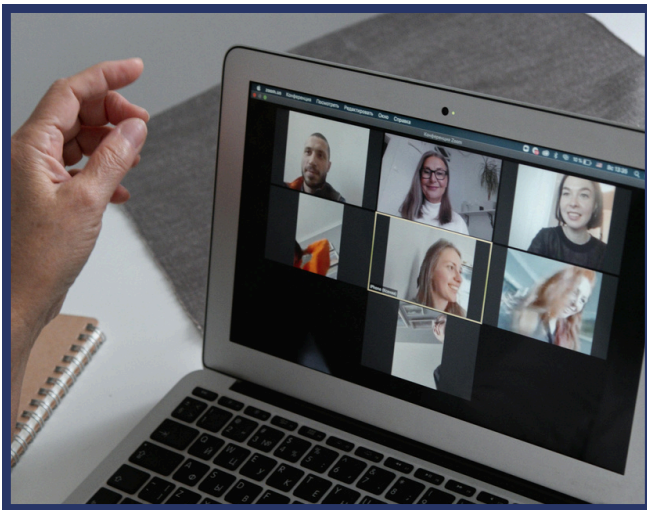
# Community Access



- ● Opportunity to sponsor a FITCI award (e.g., "Summit Innovation Award")



- ● Invitation to participate in a FITCI Power Partner networking session with startups



- ● Opportunity to host two virtual webinars with attendee insights provided



- ● Invitation to exclusive roundtables or mentorship opportunities with FITCI members

# Base Camp



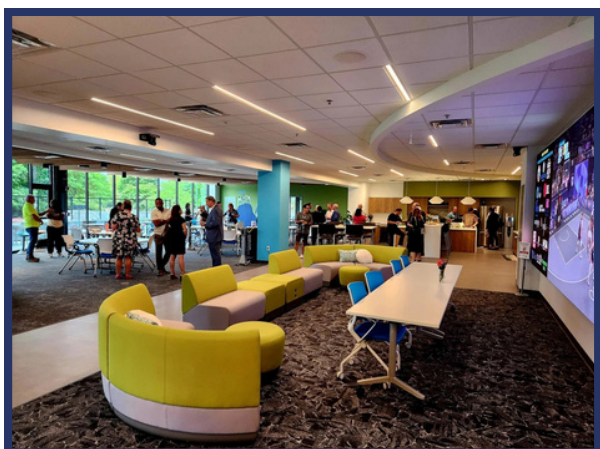
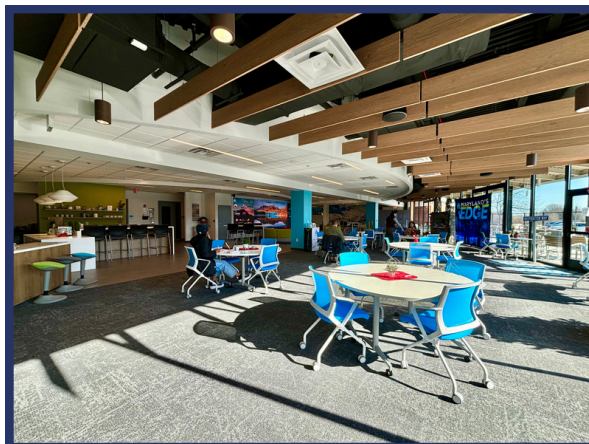
## + Conference Rooms + Hot Desks

Power Partners gain access to FITCI's cutting-edge coworking space, Base Camp, fostering collaboration and productivity in a vibrant startup environment.

- Coffee and happy hours included to encourage informal networking
- Patio/outdoor space included

### Access by Level:

- 1 day-pass to use community space per quarter
- 2 day-passes per quarter + two-hour conference room booking per year
- 2 day-passes per quarter + half-day conference room booking per year + access to hot desk once per quarter
- 4 day-passes per quarter (1/month) + full-day conference room booking per year + access to hot desk once per month



# Individual Event Sponsorship

## Exclusive Event Sponsorship Opportunity

At FITCI, we believe in creating meaningful connections and fostering a strong community of innovators and entrepreneurs. By becoming an **Exclusive Event Sponsor**, you'll have the opportunity to directly support our mission while gaining a unique platform to engage with our vibrant community. These sponsorships are limited and reserved for select events throughout the year, allowing for a focused and impactful partnership.

As an Exclusive Event Sponsor, you'll receive:

- **Meaningful Recognition:** Your support will be highlighted as the sole sponsor of the event, with acknowledgment in opening and closing remarks.
- **Community Visibility:** Your logo will be prominently displayed on event materials, including invitations, flyers, and signage, ensuring your partnership is seen by attendees and beyond.
- **Engagement Opportunities:** A chance to connect directly with our community through a branded booth, demo, or other tailored engagement opportunities at the event.
- **Digital Presence:** Feature placement in our newsletter, on our website, and across social media channels as part of our pre- and post-event communications.
- **Networking Access:** Opportunities to interact with key stakeholders, including entrepreneurs, business leaders, and community partners.
- **Lasting Impact:** Your partnership will be part of the story we share with our community, showing your commitment to supporting innovation and collaboration in our region.

These exclusive sponsorship opportunities allow you to make a direct and lasting impact on our community. If you're interested in learning more, please reach out directly to [kathie@fitci.org](mailto:kathie@fitci.org). Together, we can create meaningful connections and help drive innovation forward.

# Summary of Package Benefits

Benefit	Ascent	Peak	Summit	Pinnacle
Recognition on the FITCI website	✓	✓	✓	✓
Sponsorship listing for 1 event	✓	✓	✓	✓
Inclusion in FITCI's Annual Report as a key supporter of innovation	✓	✓	✓	✓
Monthly newsletter inclusions	1	5	7	12
Social media posts	1	3+	3+	3+
Base Camp day passes per quarter	1	2	2	4
Expo table at 2 events		✓	✓	✓
Lead acknowledgment in press materials		✓	✓	✓
Participate in a FITCI Power Partner networking session with startups		✓	✓	✓
Conference room access (per year)		2 hours	Half-day	Full-day
Interview posted on FITCI website		Blog	Audio	Video
Special verbal acknowledgments at 2 FITCI events for brand visibility			✓	✓
Access to FITCI hot desk			1/quarter	1/month
Opportunity to sponsor a FITCI award			✓	✓
Recognition at all FITCI-hosted events			✓	✓
Sponsored emails to FITCI's ecosystem 3x per year, with analytics				✓
Most prominent branding at events and expos				✓
Opportunity to host 2 virtual webinars w/ attendee insights provided				✓
Invitation to exclusive roundtables/mentorship opportunities w/ FITCI members				✓

# Thank You

## Power Partner Proposal 2025

Thank you for considering a partnership with FITCI. Together, we can create a lasting impact by empowering entrepreneurs, driving innovation, and building a thriving ecosystem in Frederick and beyond.

Your support not only fuels the success of startups but also strengthens the fabric of our local economy and the future of groundbreaking industries.

We are excited about the opportunity to work with you and look forward to building a powerful collaboration that fosters growth, innovation, and success for years to come.  
Let's innovate together!



301-694-2999



info@fitci.org



www.fitci.org



**Maryland's EDGE at 321**  
321 Ballenger Center Dr., Suite 125  
Frederick, MD 21703



**Maryland's CORE at 4539**  
4539 Metropolitan Ct.  
Frederick, MD 21704